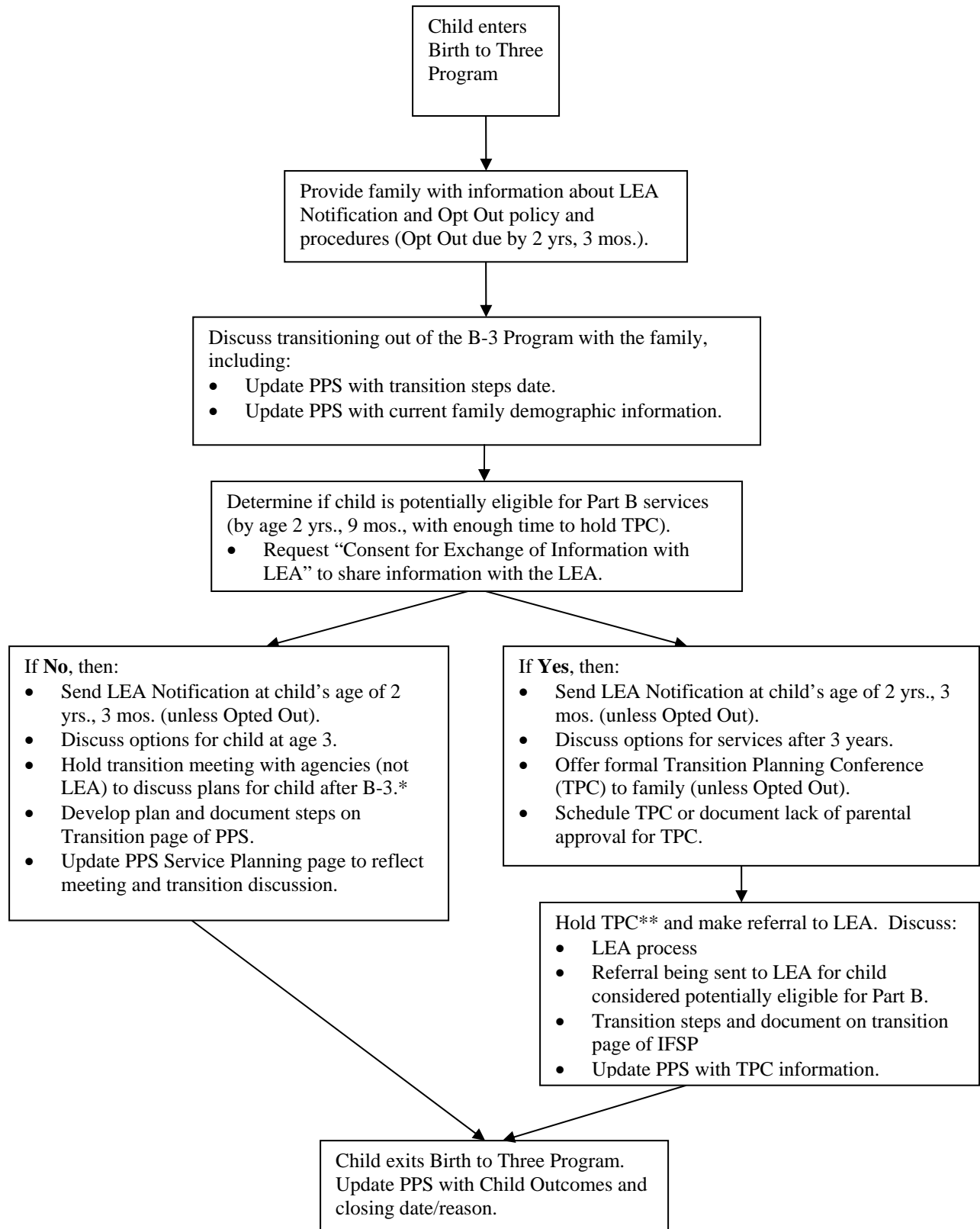


Birth to Three Transition Flow Chart
January 21, 2011



* A TPC is only required for children who have been determined potentially eligible for Part B services. A county Birth to Three Program may choose to do alternative planning meetings with children not potentially eligible, but those meetings are not considered a formal Transition Planning Conference according to federal definitions.

** State policy requires LEA participation in a TPC in order for the TPC to meet transition planning requirements.