

❖ REGISTRATION INFORMATION

○ Due by October 23  
Sharon Myhre at 608-265-8955  
[myhre@waisman.wisc.edu](mailto:myhre@waisman.wisc.edu)

- Registration includes:
- Dinner and dessert on the 9<sup>th</sup>
  - Breakfast and snacks on the 10<sup>th</sup>
  - Materials

❖ Medical Home Partner Practices

- may register a team of up to 4 individuals from your practice / medical home team
- includes physicians, NP's, PA's, nursing and other practice staff, and / or parents

❖ Regional CYSHCN Centers and/or Resource Centers

- may register a up to 2 staff from your center

❖ This activity has been approved for *AMA PRA Category 1 Credit(s)<sup>TM</sup>*

❖ Hotel reservations should be made by October 23

- directly with the Wintergreen Hotel (800-648-4765 or 608-254-2285).
- Be sure to request the block rate for the Medical Home Autism Conference.

*You are also invited to participate in the*

**THE MEDICAL HOME SUMMIT:**

**Bridging the Quality Chasm**

November 9, 2006

9:00 AM – 4:00 PM

See the enclosed brochure for more information

or online at

[www.wisc.edu/cshcn/TRAININGS.html](http://www.wisc.edu/cshcn/TRAININGS.html)

REGISTRATION FORM

Name \_\_\_\_\_

Title \_\_\_\_\_

Practice/organization \_\_\_\_\_

Address \_\_\_\_\_

Phone \_\_\_\_\_

Fax \_\_\_\_\_

Email \_\_\_\_\_

- Physician
- Nurse Practitioner / Phys. Assistant
- Nurse
- Office staff
- Other healthcare provider
- Training /outreach specialist
- Parent
- Other

I am also attending the MH Summit  
November 9 from 9:00 – 4:00

**Due by October 23**

Sharon Myhre at 608-265-8955  
[myhre@waisman.wisc.edu](mailto:myhre@waisman.wisc.edu)  
1500 Highland Ave. Room 102  
Madison, WI 53705

Schedule

Thursday 5:30 - 8:00

- o Dinner
- o National perspective on Autism Efforts
- o Parent perspectives for the primary care practice

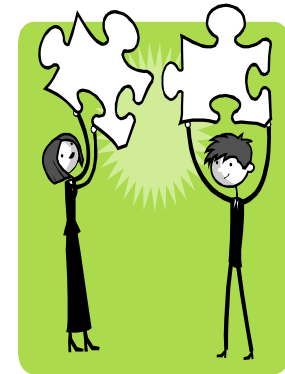
Friday 7:30 - noon

- o Breakfast
- o A multi disciplinary approach to identification, diagnosis and referral for ASD
- o Autism Research
  - o Brain Imaging
- o Prevalence of Autism
  - o National perspective
  - o Wisconsin perspective

**YOU ARE INVITED  
TO PARTICIPATE**

IN THE

**NMHAI FALL  
CONVERSATION**



**“IN THE FACE OF AUTISM”**

Jointly Sponsored By  
The National Medical Home Autism Initiative  
and the  
University of Wisconsin School of  
Medicine and Public Health

November 9 – 5:30 PM – 8:00 PM

November 10 – 7:30 AM – Noon

Wintergreen Hotel – Wisconsin Dells