



IN CONVERSATION

WITH THE NATIONAL MEDICAL HOME AUTISM INITIATIVE

NEWSLETTER FOR MEDICAL HOME PARTNERSHIPS

Issue 1: Summer 2006

AAP DEVELOPMENTAL SCREENING POLICY STATEMENT

Summary by Mala Mathur, M.D.

The new American Academy of Pediatrics Policy Statement on Developmental Screening published in the July 2006 issue of Pediatrics summarizes the status of developmental screening and provides recommendations for how to implement the screening process in the pediatric office.

In the policy statement, the AAP makes the distinction between “surveillance”, “screening” and “evaluation”. Surveillance involves listening to families, observation and informal clinical assessment to identify children who may be at risk for developmental delays. This is different from screening which involves identifying and refining the recognized risk of delay through the use of validated screening tools. Evaluation involves the complex process of identifying the particular developmental condition affecting a child.

The algorithm included in this policy statement recommends developmental surveillance at every well child visit and developmental screening using a validated screening tool at visits 9 months, 18 months and 30 months. The 30 month screen can be done at 24 months if this simplifies the well visit schedule and reimbursement issues in your office. In addition, the screening tools should be used at any additional visit that either the parent

or pediatric provider feels that it is warranted. The AAP also recommends that an autism specific tool be given to all children at the 18 month well check since symptoms of autism often present at this time and research has supported the effectiveness of early intervention.

If the screening test is positive, the AAP recommends that you make a referral to both a developmental specialist and the Early Intervention Program for children under three years of age. If a developmental disorder is identified, the child should be identified as a child with special health care needs and should be managed as other children with chronic medical conditions.

The CPT codes that can be used for developmental screening are listed in the AAP Policy Statement. The code 96110 can be used for limited developmental testing such as using a validated screening tool like the Ages and Stages Questionnaire. This code includes the payment for a non physician to administer the screening tool. It is expected that physicians will review the results of the screening tool and this is included in the overall evaluation and management code that is applied the child’s well child visit.

Technical Assistance Notes ⇒ ⇒ ⇒ ⇒

- ⇒ Please let Christine know if you are interested in planning an in-service for your practice on developmental screening and / or any specific screening tools – we are scheduling fall and winter dates now.
- ⇒ NMHAI will provide each practice with laminated copies of the algorithm – let Christine know the number your practice needs.

MEDICAL HOME CONVERSATIONS - UPCOMING DATES AND PROGRAMS

Reminder about the NMHAI Medical Home Partners Conversation schedule for the remainder of 2006. The teleconference format "conversations" are held on the second Thursday of the month from 12:00 -1p.m. Watch for the e-mail reminders about these conferences. Be sure to invite others from your practice to join you.

Thursday September 14th:

"Could it be Autism"- A Parent's Guide to First Signs and Next Steps"

We will discuss this book and have a conversation with Nancy Wiseman, the author and founder of First Signs, Inc., a national non-profit organization that educates parents and professionals about the early signs of autism.

Thursday October 12th:

Care Coordination for children with Autism and other special health care needs. We will plan having a discussion about what are the needs of pediatricians in providing coordinated care and connecting children and families with community resources. These needs can be addressed through the technical support offered through the NMHAI.



THE MEDICAL HOME SUMMIT: THE BRIDGE ACROSS THE QUALITY CHASM

November 9, 2006

8:30 AM – 3:45 PM

Wintergreen Hotel - Wisconsin Dells

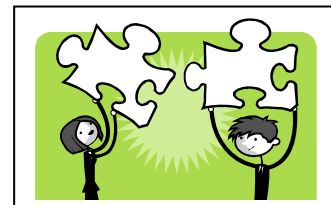
Sponsored by the WI CYSHCN program.

"IN THE FACE OF AUTISM" NATIONAL MEDICAL HOME AUTISM CONVERSATION

November 9 – 5:30 PM – 8:30 PM

November 10 – 8:00 AM – Noon

Wintergreen Hotel – Wisconsin Dells



❖ As a national medical home autism partner you are invited to participate in this in-service opportunity following the Medical Home Summit. This autism focused in-service begins on Thursday evening over dinner and dessert. A panel of parents, who have children on the autism spectrum, will share their stories of the realities they face, on a daily basis, as they work to find and develop appropriate supports and services for their child(ren) within their communities.

❖ Friday speakers will offer a closer look at the face of autism as they share information on current research, interventions and treatment options and projects at the national and state levels.

❖ Plan now to schedule time off for this in-service opportunity. Each medical home partnership will receive one registration that includes dinner, breakfast and overnight accommodation. Mini grants may be used to supplement expenses for travel or additional participants. More detailed information will be distributed in September. CME credits will be available for this summit.



MARK YOUR CALENDARS FOR 2007 NMHAI MEDICAL HOME PARTNER CONVERSATIONS

January 11, February 8, March 8, April 12, May 10, September 13, October 11 and November 8

On February 8th, 2007 we will have a discussion with the founder of Autism Today, Karen Simmons who compiled *"The Official Autism 101 Manual"*. NMHAI partners will receive a copy of this manual for their reference on caring for children on the Autism Spectrum.

Technical Assistance Notes ⇒ ⇒ ⇒ ⇒

Please contact Christine if you have a topic idea, book suggestion or speaker recommendation for a Medical Home Partner "Conversation" for 2007.

MASTER OF PUBLIC HEALTH INTERN

Many of you had the opportunity to meet Mala Mathur, M.D. during her internship with NMHAI the past 4 months. This internship was part of her requirements for the Masters of Public Health program she was enrolled in this past year at UW Madison. We are sorry to note that her internship with us ends this week and we will miss the enthusiasm, energy and a clinical perspective she brought to our project on a daily basis. We thank her for sharing her knowledge and experiences with us.

We are pleased, however, to announce that Mala will begin practicing at Group Health Cooperative in Madison at the end of August. We are hopeful that we will find many ways to stay connected and keep Mala actively involved with NMHAI during the coming two years.

Mala can be contacted through email at mmathur@wisc.edu



USEFUL WEBSITES

National Medical Home Autism Initiative <http://www.waisman.wisc.edu/nmhai/index.html>

National Center for Medical Home Initiatives for Children with Special Health Care Needs
<http://www.medicalhomeinfo.org>

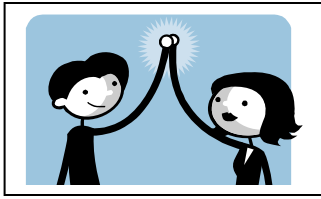
Center for Medical Home Improvement <http://www.medicalhomeimprovement.org>

Developmental and Behavioral Pediatrics Online <http://dbpeds.org>

Zero to Three <http://zerotothree.org>

The Commonwealth Fund <http://cmwf.org>

The National Academy for State Health Policy <http://nashp.org>



NMHAI MEDICAL HOME PARTNERS

Physicians Participants

- Jane Byrd, M.D. (Midelfort Pediatric Clinic- Chippewa Falls, WI) byrd.jane@mayo.edu
- Tim Chybowski, M.D. (UW Health Pediatrics- Madison, WI) timothy.chybowski@UWMF.WISC.EDU
- Howard Dhonau, M.D. (Agnesian Healthcare- Fond du Lac, WI) Dhonau@agnesian.com
- John Dunn, M.D. (16th Street Community Health Center, Milwaukee, WI) john.dunn@SSCHC.org
- Susan Ehrlich, M.D. (UW Health Pediatrics- Madison, WI) Susan.Ehrlich@UWMF.WISC.EDU
- Jaylynn Kao, M.D. (Agnesian Healthcare- Fond du Lac, WI) kao@agnesian.com
- Sara Kreckman, M.D. (UW Health Pediatrics- Madison, WI) Sara.Kreckman@UWMF.WISC.EDU
- Thomas Meier, M.D. (UW Health Pediatrics- Madison, WI) thomas.meier@UWMF.WISC.EDU
- Mark Rosenberg, MD. (Children's Healthcare Associates, Chicago IL) markrosenbergmd@aol.com
- Francis Rushton, M.D. (Beaufort Pediatrics, Beaufort, S.C.) rushton@hargray.com
- Soniya Shah, M.D. (Aurora Medical Center- Kenosha, WI) soniya.shah@aurora.org
- Jeffrey S. Sleeth, M.D. (UW Health Pediatrics- Madison, WI) Jeffrey.sleeth@UWMF.WISC.EDU
- Amy Slette, M.D. (Ministry Healthcare- Rhinelander, WI) aslette@shsmh.org
- Graciela Villadoniga, M.D. (16th Street Community Health Center- Milwaukee, WI) gracielavilladoniga@SSCHC.org
- Marcia Wirt, M.D. (Marshfield Pediatric Clinic- Chippewa Falls, WI) Wirt.marcia@marshfieldclinic.org

NATIONAL MEDICAL HOME AUTISM INITIATIVE

- William Schwab, M.D. – Primary Investigator (professor, Dept. of Family Medicine, UW Madison) william.schwab@fammed.wisc.edu
- Daniel Bier, MPA, MSW – Co Investigator (Associate Director, Waisman Center, UW Madison) bier@waisman.wisc.edu
- Linda Tuchman, PhD – Co Investigator (Early Intervention Program, Waisman Center, UW Madison) tuchman@waisman.wisc.edu
- Christine Breunig, MS – Project Coordinator (NMHAI, Waisman Center, UW – Madison) breunig@waisman.wisc.edu
- Mark Rosenberg, MD – Pediatric Consultant (Children's HealthCare Associates, Chicago, IL) markrosenbergmd@aol.com