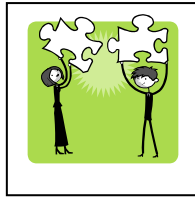


Medical Home Autism Summit

"In the Face of Autism"



Thursday, November 9		
5:15 – 5:45 <i>REGISTRATION / GATHERING TIME</i>		
5:45	Welcome and Introductions from NMHAI	William Schwab, MD – NMHAI Primary Investigator
6:00 – 6:45 <i>DINNER BUFFET</i>		
6:45	National Perspective on Autism: NMHAI / IACC and Service Guidelines	Monique Fountain-Hanna, MD,MPH, MBA – MCHB Project Officer
7:00 – 8:00	“FOOD FOR THOUGHT” A Conversation with Parents of children with ASD and other Developmental Disabilities	Facilitator: Christine Breunig, NMHAI Parents: Karen Sperling – Kenosha Molly Immendorf – Madison Nelcinia Ramos – Milwaukee Lynn Haveman – Madison Karl Pierick – Madison
Friday, November 10		
7:15 <i>BREAKFAST BUFFET</i>		
8:00	Welcome and Introductions from NMHAI	Linda Tuchman, PhD – Co Investigator NMHAI
8:10	Opening Comments Identification and diagnosis of ASD and the benefits of using an inter-disciplinary approach	Mark Rosenberg, MD, NMHAI Pediatric Consultant Betty Ulanski, MSW Susan Heighway , M.S., APRN, BC, APNP Clinical Professor & Nurse Practitioner Un Center for Excellence in Developmental Disabilities , Waisman Center – UW Madison
9:30	Conversation and Sharing by Medical Home Partner Practices	Facilitated by Christine Breunig
9:45 <i>BREAK</i>		
10:00	Autism Research and related initiatives at the Waisman Center – UW Madison	Daniel Bier, MPA,MSW, Associate Director Waisman Center and Co-PI for NMHAI
10:15	The Social Brain Through the Eyes of Autism Autism Research	Kim Dalton, Research Scientist, UW Madison
11:30	Prevalence of ASD National and Wisconsin perspectives	Jackie Roessler, Project Coordinator WISADDS
11:45	Closure Evaluation	Christine Breunig, Project Coordinator NMHAI