



Understanding Autism

Saturday, September 9, 2006
Project Bridges CCR&R Training

- Early Identification
- Autism Spectrum Disorders
- Classroom Considerations
- Partnerships and Connections
- Resources

Agenda

- Welcome and Introductions
- Early Identification and Referral
 - Family Partnerships
 - Break
- Autism Spectrum Disorders
 - Lunch
- Considerations for the Classroom
 - Professional Partnerships
 - Resource
 - Reflection and Evaluation

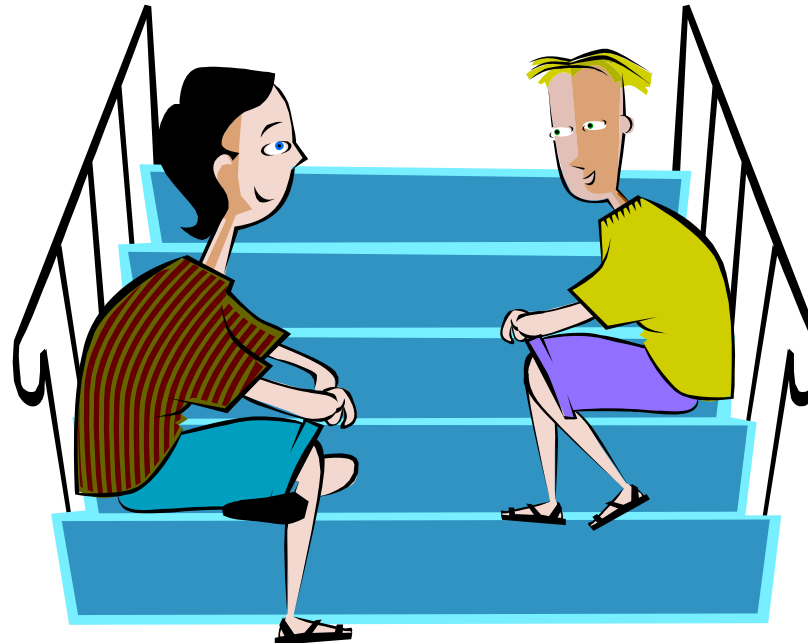
**“Human conversation is the most ancient and easiest way to cultivate
the conditions for change –**

personal change, community and organizational change.”

Turning to One Another – Simple Conversation to Restore Hope to the Future

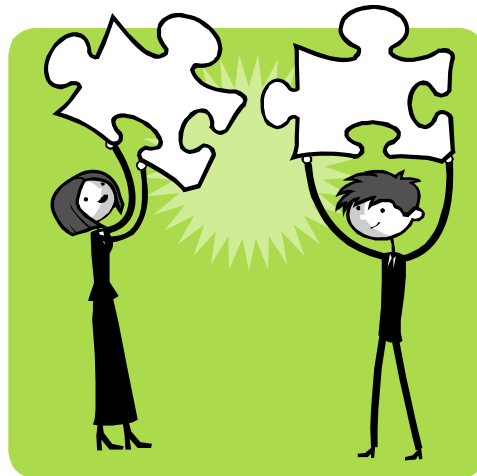
The intent of this book is to encourage and support you in beginning conversations about things that are important.

Margaret J. Wheatley, Berrett-Koehler Publishers, Inc., San Francisco, 2002



Conversation >>>>>>>>

What about “autism” brought you to this workshop?



Share with the group.....



Early Identification



Learn the Signs. Act Early.

*It's time to change
how we view a child's growth!*

Conversation >>>>>>

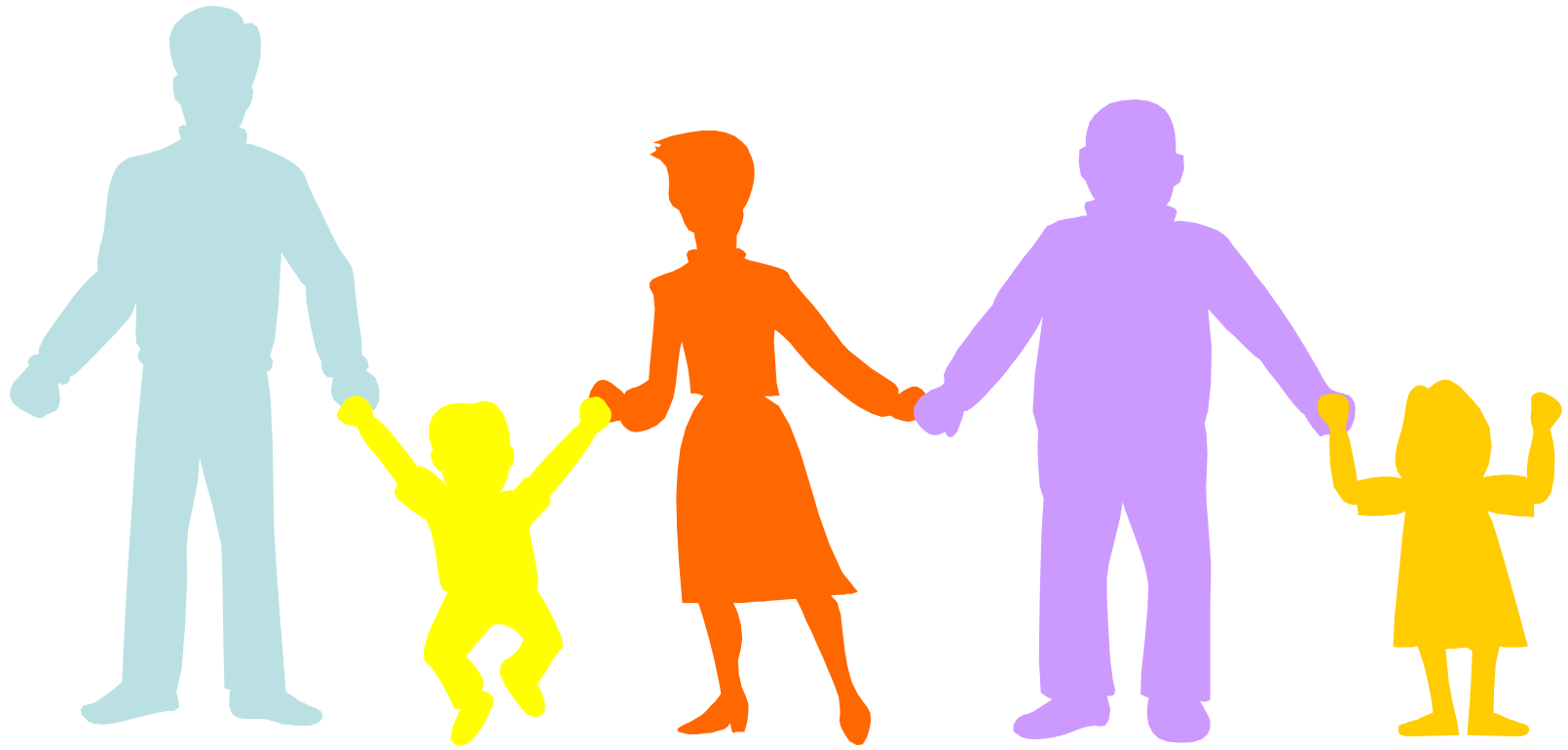
- What do you do in your work when you are worried about addressing a concern?
- How do you approach a parent when you feel their child might have a developmental concern.



EARLY INTERVENTION

- The intent of early child intervention is to lay a foundation, in conjunction with the family, to support infants as they grow and mature into healthy individuals.
- Healthy means the best possible outcome the physical, mental, and social functioning and well-being of an individual

Family Centered Care is Best Practice



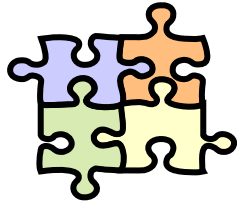
Family-Professional Partnerships

- Promote relationship in which family & professionals work together to ensure the best services for the child & family
- Recognize & respect the knowledge, skills and experience that families and professionals bring to the relationship
- Acknowledge that the development of trust is an integral part of a collaborative relationship
- Facilitate open communication so families & professionals feel free to express themselves

Family-Professional Partnerships

- Create an atmosphere in which the cultural traditions, values, and diversity of families are acknowledged and honored
- Recognize that negotiation is essential
- Include acknowledgment of mutual respect for each others culture, values, and traditions

*What families want
depends on the difference
between the support they already have
and what they will need
given their situation.*



Autism Spectrum Disorder

- Definition
- Examples

Conversation >>>>>>

**What comes to your mind when you hear the word
“autism”?**



Classroom Considerations

- Environment
- Communication
- Resources

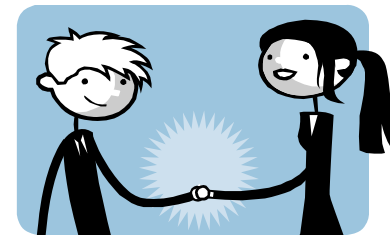
Conversation >>>>>>>

- What have you tried within your classroom / child care program that seems to work for children with special needs?



Partnerships & Coordination

*Early Childhood professionals,
Healthcare professionals,
Community service professionals,
parents and families
must work together as partners
to help children grow up
healthy and strong.*



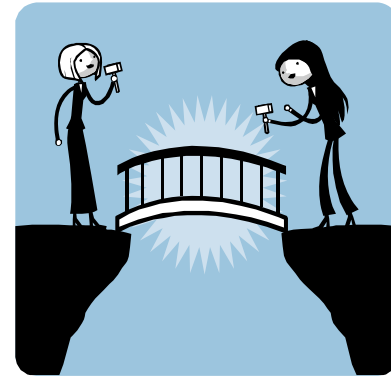
Conversation >>>>>>

- What person or organizations do you coordinate with to provide services for children with special needs / ASD?



Early Childhood Professionals in Partnership with:

- Birth to Three
- Early Childhood Programs
- Community Services
- Medical Practices

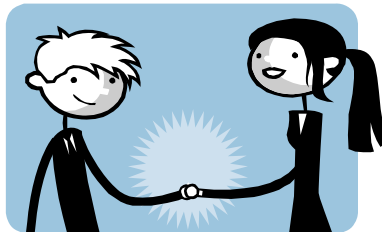


Partnerships....

- Recognize the benefits of partnerships with parents, educators, primary care physicians and community professionals
- Assure quality services and care for children with developmental delays including autism

MEDICAL HOME PARTNERSHIPS

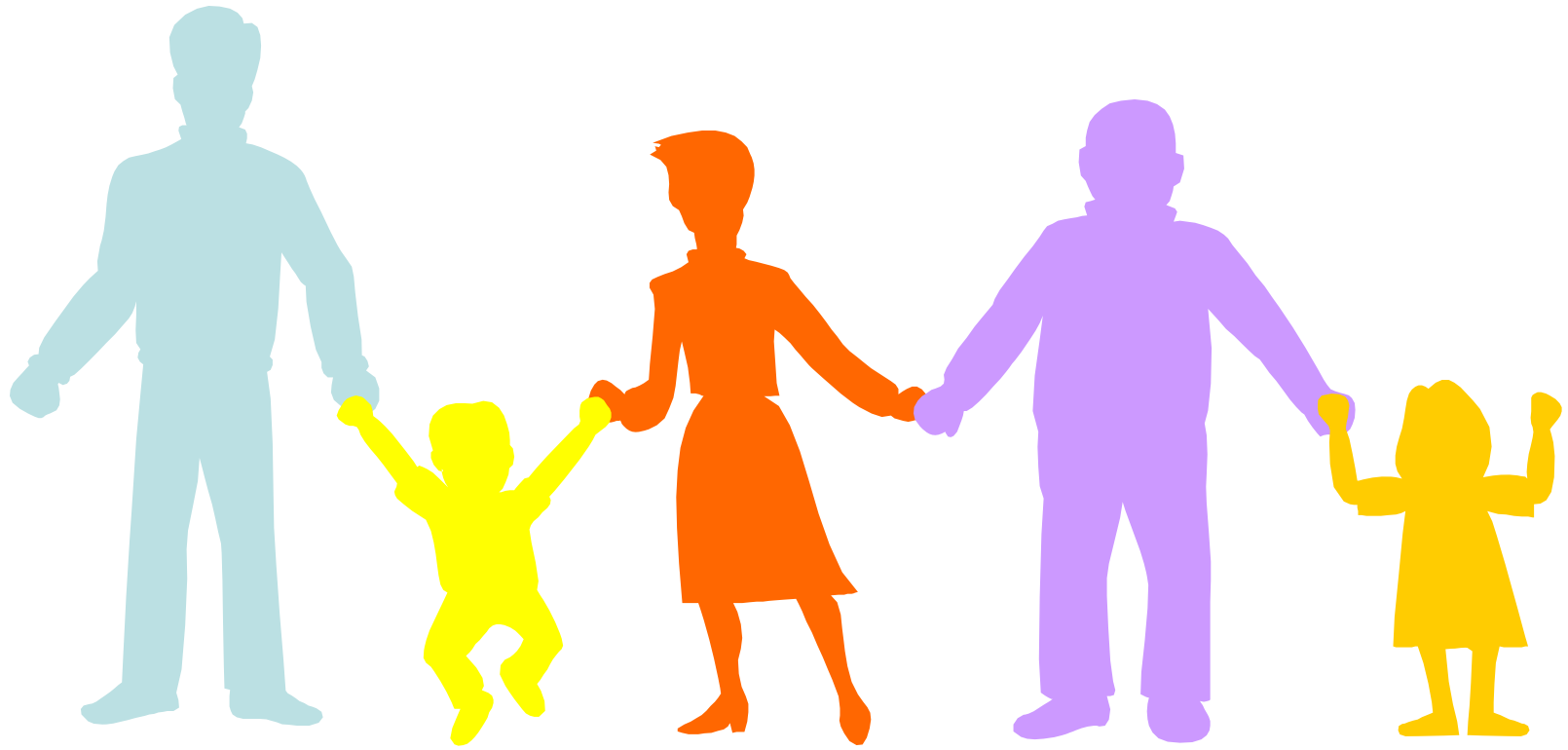
- Families involved in decision making are more satisfied with their primary care provider
- Families active in developing a CYSHCN care plan are more likely to follow and maintain the care plan



Why a Medical Home ?

- Only 20% of all visits to the pediatrician's office are developmental or behavioral in nature
- Only 70% of children diagnosed with mental retardation are diagnosed by providers other than their pediatrician
- 80% of parental concerns are correct and accurate

Family Centered Care is Best Practice



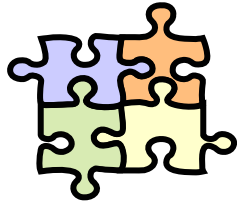
Family-Professional Partnerships

- Promote relationship in which family & professionals work together to ensure the best services for the child & family
- Recognize & respect the knowledge, skills and experience that families and professionals bring to the relationship
- Acknowledge that the development of trust is an integral part of a collaborative relationship
- Facilitate open communication so families & professionals feel free to express themselves

Family-Professional Partnerships

- Create an atmosphere in which the cultural traditions, values, and diversity of families are acknowledged and honored
- Recognize that negotiation is essential
- Include acknowledgment of mutual respect for each others culture, values, and traditions

*What families want
depends on the difference
between the support they already have
and what they will need
given their situation.*

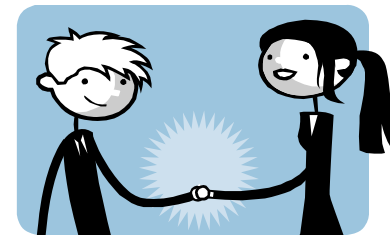


Autism Spectrum Disorder

- Definition
- Examples

Partnerships & Coordination

*Early Childhood professionals,
Healthcare professionals,
Community service professionals,
parents and families
must work together as partners
to help children grow up
healthy and strong.*



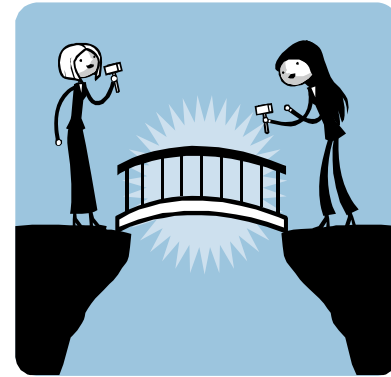
Conversation >>>>>>

- What person or organizations do you coordinate with to provide services for children with special needs / ASD?



Early Childhood Professionals in Partnership with:

- Birth to Three
- Early Childhood Programs
- Community Services
- Medical Practices

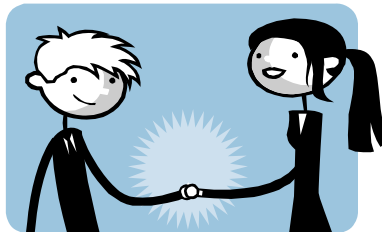


Partnerships....

- Recognize the benefits of partnerships with parents, educators, primary care physicians and community professionals
- Assure quality services and care for children with developmental delays including autism

MEDICAL HOME PARTNERSHIPS

- Families involved in decision making are more satisfied with their primary care provider
- Families active in developing a CYSHCN care plan are more likely to follow and maintain the care plan



Why a Medical Home ?

- Only 20% of all visits to the pediatrician's office are developmental or behavioral in nature
- Only 70% of children diagnosed with mental retardation are diagnosed by providers other than their pediatrician
- 80% of parental concerns are correct and accurate

Families should come to expect

- Care for their child 24 hours a day, 7 days a week.
- To be a valued and respected member of my child's medical team.
- To get the same doctor or office staff with every visit.
- That their child's doctor never gives up on meeting my child's needs.
To receive referrals to specialists or specialty care when my child needs it.
- Their child's providers to be familiar with who their child is & his/her health condition(s).
- Their child they are treated with genuine concern and compassion.

Resources for Supporting Parents and Families

Recognize and use resources within the

Educational system

Medical system

Community service systems.

conversation

What resources have you found to be helpful

- In your local community
- In the state of Wisconsin
- On a national level



Wisconsin Resources

- Regional Children with Special Health Care Needs Centers
<http://www.mch-hotlines.org>
 - Northeastern – St. Vincent Hospital – Green Bay
 - Northern – Dept. of Public Health – Wausau
 - Southeastern – Children’s Hospital – Milwaukee
 - Southern – Waisman Center – Madison
 - Western – Dept of Public Health – Chippewa Falls
- Autism Society of Wisconsin www.asw4autism.org
 - Autism Society of Greater Madison <http://www.autismmadison.org/>
 - Autism Society of Southeastern Wisconsin, Inc. <http://www.asew.org/>
 - Autism Society of Northeast Wisconsin <http://www.asnew.org/>
 - Autism Society of the Fox Valley <http://www.focol.org/asfv/>
 - Chippewa Valley Autism Society <http://www.geocities.com/wicvas/>
- Wisconsin Academy of Pediatricians <http://www.wisaap.org/>
- Wisconsin Academy of Family Physicians <http://www.wafp.org/>

National Resources

- Maternal Child Health Bureau – HRSA www.mchb.hrsa.gov
- Center for Disease Control www.cdc.gov/ncbddd/autism/actearly
- National Dissemination Center for Children with Disabilities www.nichcy.org

- American Academy of Pediatrics www.aap.org
- American Academy of Family Physicians <http://www.aafp.org/>

- National Center of Medical Home Initiatives (AAP) www.medicalhomeinfo.org
- National Medical Home Autism Initiative www.waisman.wisc.edu/nmhai/

- First Signs www.firstsigns.org
- Autism Society of America <http://www.autism-society.org>

Closing Conversation

- What new idea will you take with you as you leave today?



Waisman Center – UW Madison

Betty Ulanski -- Senior Clinical Social Worker

University Center for Excellence In Developmental Disabilities - MCH LEND Program

ulanski@waisman.wisc.edu 608-263-9227

Tuchman-Ginsberg, Linda – Outreach Program Manager

University Center for Excellence In Developmental Disabilities -Early Intervention

tuchman@waisman.wisc.edu 608- 263-6467

Breunig, Christine - Senior Outreach Specialist

University Center for Excellence In Developmental Disabilities – National Medical Home Autism Initiative

breunig@waisman.wisc.edu 608-890-0145

You are on your way to
making a difference
in the life of
the children and families
you work with !!!

